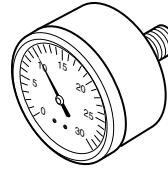


# Pressure Gauges

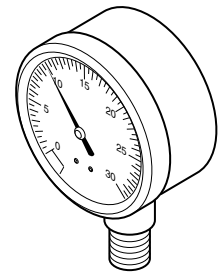
Pressure gauges for continuous indication of air pressure in pneumatic control systems.

Features:

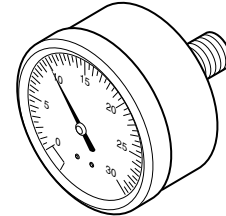
- 0 to 30 psig (0 to 200 kPa) models permit readout of main air pressure and/or output pressures of pneumatic control components.
- 0 to 160 psig (0 to 1100 kPa) models permit readout of pressure in air-compressor receivers or high-pressure main air lines.
- Available in flush-mounted, stem-mounted, bottom-mounted or lower-back mounted models.



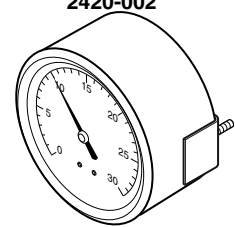
2420-001



2420-002



2420-003, 2420-004



2420-005

Model Chart						
Model No.	Replaces Model No.	Dial Size in. (mm)	Range psi (kPa)	Mounting	Air Connection	Construction and Finish
2420-001	A201/AL-362	1-1/2 (38)	0 to 30 (0 to 200)	Stem	1/8 in. MNPT center back	ABS plastic case and friction ring
2420-002	A203				1/8 in. MNPT bottom	
2420-003	A204-3/AL-322		1/8 in. MNPT center back			
2420-004	A204-4/AL-327					
2420-005	A205-01		0 to 160 (0 to 1100)	Flush	1/4 in. barb back	
		0 to 30 (0 to 200)	1/8 in. MNPT lower back			

Specifications	
Gauge actuation	Phosphor bronze Bourdon tube through sturdy brass gears.
Flush panel mounting	2420 Series U-clamp mounting for panels 1/16 to 3/4 in. thick.
Dimensions	
2420-001	1-42/64 x 1-1/2 in. (34 x 38 mm).
2420-002	1-15/32 x 1-3/32 in. (37 x 27 mm).
2420-003, 2420-004	2-11/64 x 1-55/64 in. (55 x 28 mm).
2420-005	2-1/4 x 1-53/64 in. (57 x 46 mm).